

# MODULAR SCREENWALL SYSTEM



ConcealFab has a Modular Screenwall System that can accommodate most rooftops and antenna configurations.

## PIM SHIELD®

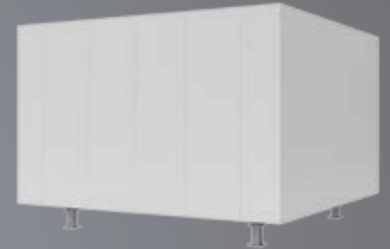
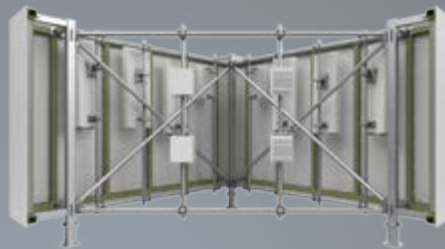


- Patent pending pipe cross-over kit optimized for low PIM performance
- Reduced surface area/ High contact pressure at all bolted connections
- Mounting pipes for radios are strategically placed 3 FT. or more behind antennas to keep equipment away from high energy PIM zone



## MODULAR SIMPLICITY

- Length and width in 1' increments
- Height in 1' increments ranging from 6' to 10'
- 1 to 4 sided configurations available



## clearWave™

clearWave™ panel system is RF transparent through low band, c-band and mmW.

More on clearWave™ performance [here](#).

## 3M Color Matching

All panels wrapped with printed UV-stable 3M film that can digitally match all colors and patterns.

*\*Paint option also available.*

More on our 3M color matching [here](#).