

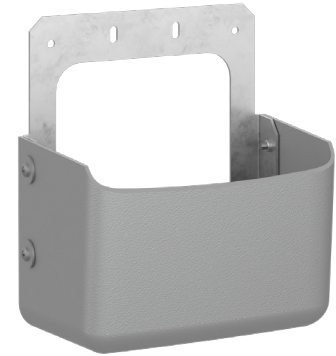
## PRODUCT SUMMARY

ConcealFab's Samsung AT1K0X Cable Concealment Shroud provides modest concealment in markets where the smallest concealment designs are required.

Create seamless color from the shroud to the radio by wrapping the front of the radio in our color matched mmWave vinyl wrap (900565 5G Wrap, 20" x 25" sold separately).



[www.cf-pat.com](http://www.cf-pat.com)



## SPECIFICATIONS

<b>PART NUMBER</b>	900986
<b>DESCRIPTION</b>	Cable Concealment Shroud, Samsung AT1K0X
<b>RADIO COMPATIBILITY</b>	1X Samsung AT1K01 1X Samsung AT1K02 1X Samsung AT1K04 1X Samsung AT1K06
<b>POLE DIAMETER RANGE</b>	<i>*The antenna mounts with the Samsung Provided Hardware Bracket</i>
<b>MATERIAL</b> structural components	304 Stainless Steel & ABS Plastic
<b>MAXIMUM WIND SPEED</b>	150 MPH
<b>VOLUME</b>	0.23 ft <sup>3</sup>
<b>APPROXIMATE WEIGHT</b> without RF equipment	2.58 lbs

## COLOR OPTIONS

<b>Jet Black-001</b> <i>Lightly textured</i> RAL 9005	<b>Terra Brown-002</b> <i>Lightly textured</i> RAL 8028	<b>Light Gray-003</b> RAL 7035	<b>Silver-004</b> FED STD 36463	<b>Black Green-021</b> RAL 6012	<b>Tan-040</b> FDR STD 30340
---	---	-----------------------------------	------------------------------------	------------------------------------	---------------------------------

\*Light Gray - 003 matches light concrete or aluminum poles

\*Silver - 004 matches galvanized steel poles

**ASK ABOUT OUR CUSTOM COLOR OPTIONS**

*There may be minor differences between color options and finished goods due to formulation variations.*