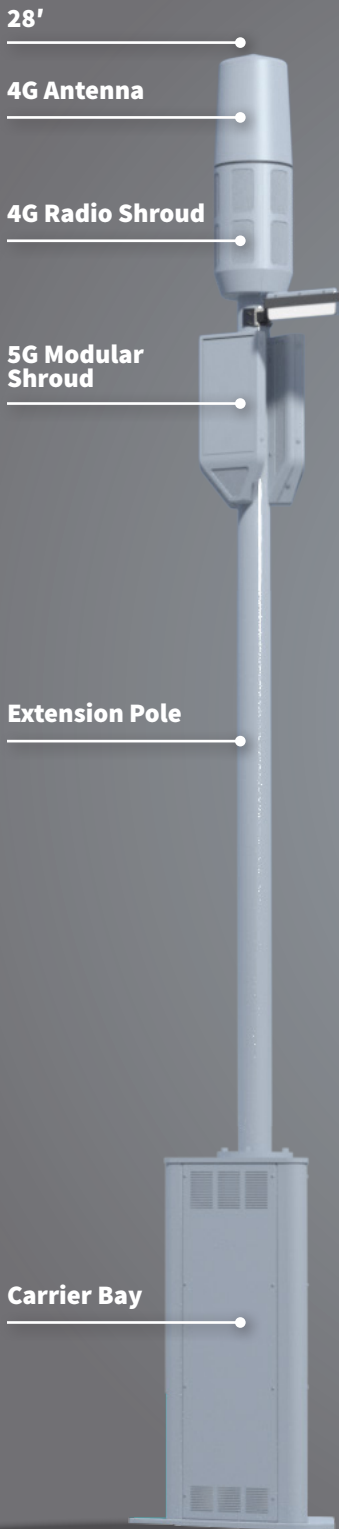


V3



Product Summary:

The Vertex portfolio has a mix of iconic poles designed to house multiple 4G and 5G equipment configurations for capacity and coverage in a given area. The pole's clean aesthetics, custom luminaire, and smart city functionality make it an ideal solution for hard-to-permit locations.

V3 has over 25,000 in³ of equipment space available to accommodate a single operators' with medium-density, small cell site requirements.

SPECIFICATIONS

Overview	4G/5G Pole Solution w/ modular design for simple integration and on-site construction.
Pole Capacity	(1) Base section dedicated to single carrier 4G radio equipment, AC & DC power distribution, fiber distribution, meter & disconnect (space permitting), (1) 6" nom. extension pole capable of mounting (6) 5G radios w/ concealments, and (1) pole shroud for low-powered 4G radios and omni-directional canister antenna
Equipment	Accommodates all small cell RAN equipment vendors
Material	Galvanized, carbon steel frame w/ aluminum doors
Radome	ClearWave for all mmW and sub-6GHz applications
Maximum Wind Speed	900107 - 171 MPH
Luminance	Front LED lighting
Smart City Functionality	Provisions for video surveillance, WIFI, weather monitoring and reporting, gunshot detection, GPS, custom wrapping and more
Foundation	Cast-in-place. Anchor Bolt Kit sold separately
Structural	Analysis per TIA-222, AASHTO & Local building codes
Thermal	Equipment bay fan-cooling in accordance with GR-487
Electrical	UL system listed