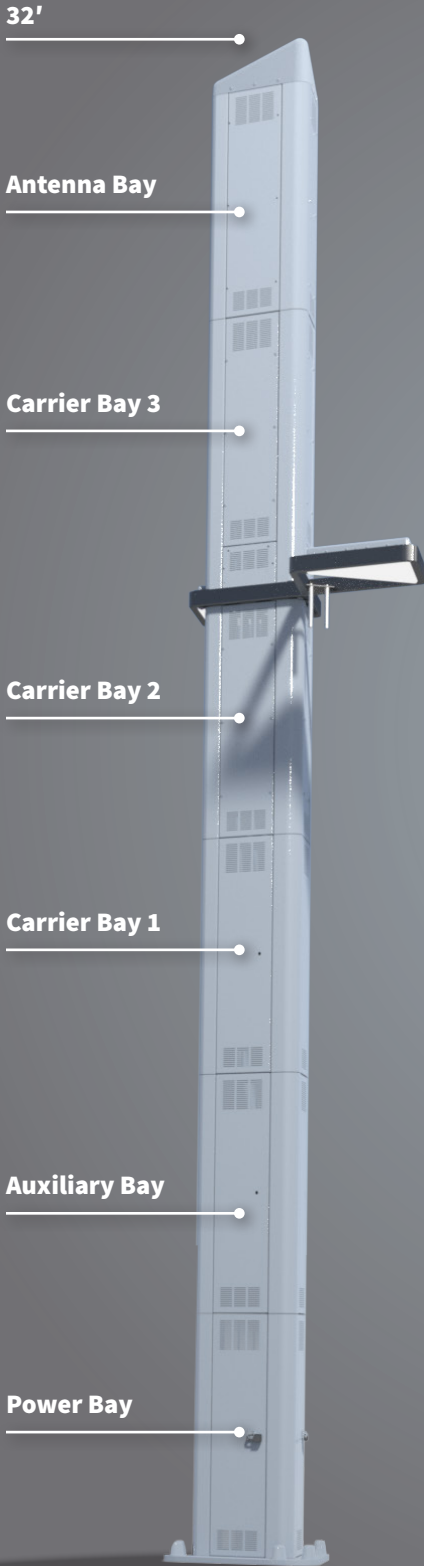


900701 Standard Duty (SD)
900702 Heavy Duty (HD)

V2



Product Summary:

The Vertex portfolio has a mix of iconic poles designed to house multiple 4G and 5G equipment configurations for capacity and coverage in a given area. The pole's clean aesthetics, custom luminaire, and smart city functionality make it an ideal solution for hard-to-permit locations.

V2 has over 150,000 in³ of equipment space available to accommodate multiple operator's small cell equipment packages on a single pole, or can be used exclusively for a single operator with high-density site requirements.

SPECIFICATIONS

Overview	4G/5G Colocation Pole Solution w/ modular design for simple integration and on-site construction
Pole Capacity	(3) High-capacity dedicated carrier equipment bays for 4G and 5G radios, (1) dedicated antenna section for omni-directional canister antenna, (1) auxiliary bay for smart city infrastructure and (1) power bay for AC & DC power distribution, fiber distribution, meter & disconnect
Equipment	Accommodates all small cell RAN equipment vendors
Material	Galvanized, carbon steel frame w/ aluminum doors
Radome	ClearWave for all mmW and sub-6GHz applications
Maximum Wind Speed	900701 - 115 MPH 900702 - 171 MPH
Luminance	Front & back LED lighting
Smart City Functionality	Video surveillance, WIFI, weather monitoring and reporting, gunshot detection, GPS, remote sensing, custom wrapping and more
Foundation	Cast-in-place. Anchor Bolt Kit sold separately
Structural	Analysis per TIA-222, AASHTO & Local building codes
Thermal	Equipment bay fan-cooling in accordance with GR-487
Electrical	UL system listed