

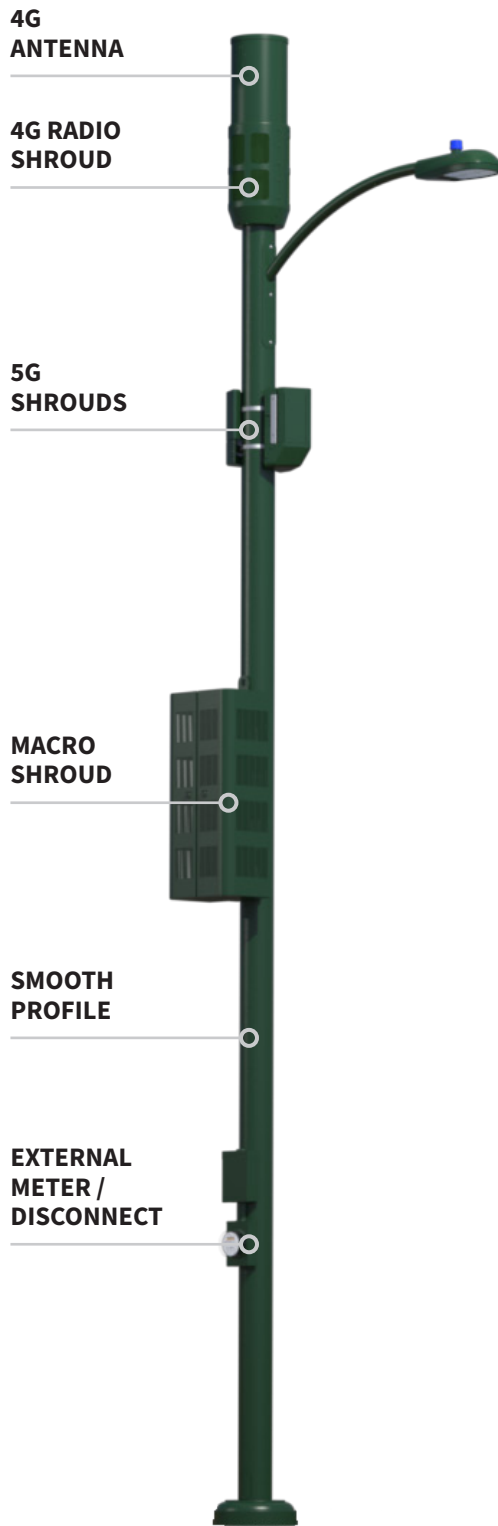
**6" SMOOTH
STANDARD POLE**

Product Summary:

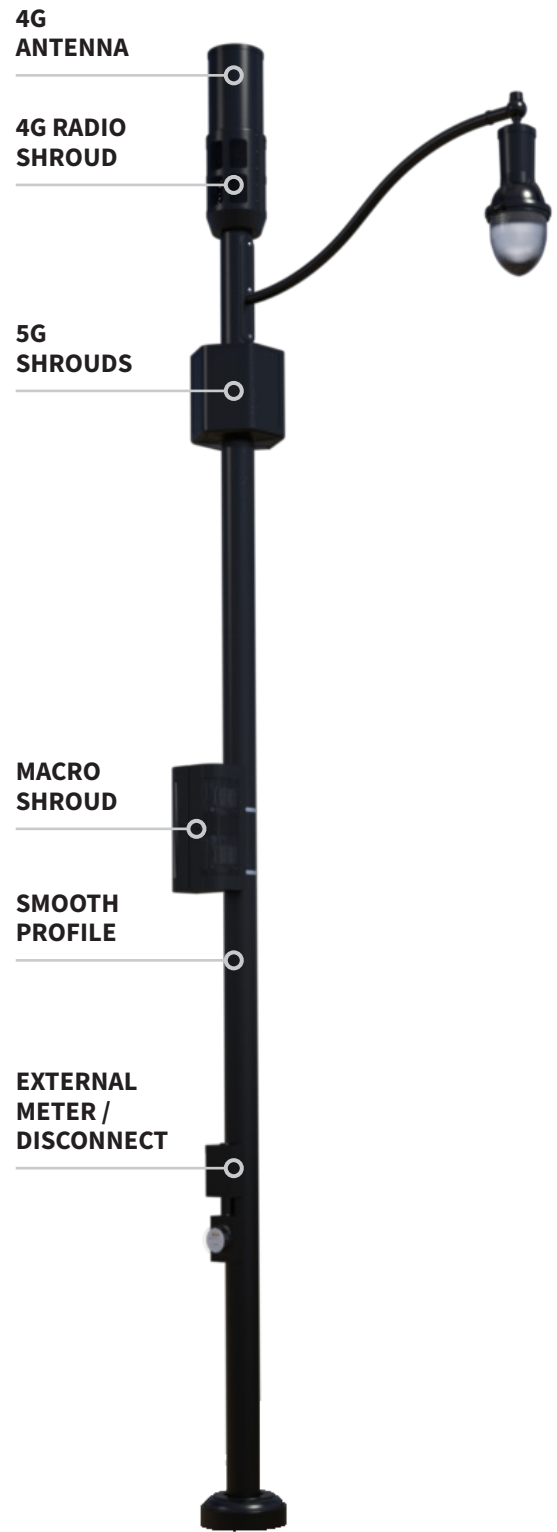
The standard pole portfolio has a mix of aesthetically pleasing multi-use poles designed to hang multiple 4G and 5G equipment attachments for capacity and coverage in a given area. Standard poles come in several nominal sizes and accommodate a variety of different luminaires making them an ideal solution for hard-to-permit locations.

SPECIFICATIONS

Overview	4G/5G Standard Poles w/ handholes for fiber, power & coax access
Capacity	(1) Pole top shroud for low-powered 4G radios, (1) side-mount shroud for high-powered 4G radios, (1) universal cantenna sleeve for all omni-directional canister antennas, and (3) modular shrouds w/ downtilt for each tenant's 5G deployment
Sheathing	Smooth (6", 8" & 10" nominal sizing)
Equipment	Accommodates all macro & small cell RAN equipment vendors
Material	Galvanized, carbon steel frame
Radome	ClearWave for all mmW and sub-6GHz applications
Max. Wind Speed	Up to 171 MPH (as required)
Luminance	Universal luminaire arm accommodates most luminaires.
Smart City	Video surveillance, WIFI, weather monitoring and reporting, gunshot detection, GPS, remote sensing, custom color matching and more
Foundation	Cast-in-place, direct-embed, driven pile, helical anchor Anchor Bolt Kit sold separately; foundation design available
Structural	Analysis per TIA-222, AASHTO & Local building codes
Thermal	Passive & active cooling (as required) in accordance with GR-487
Electrical	Externally mounting available for all AC & DC power equipment vendors



**8" SMOOTH
STANDARD POLE**



**10" SMOOTH
STANDARD POLE**