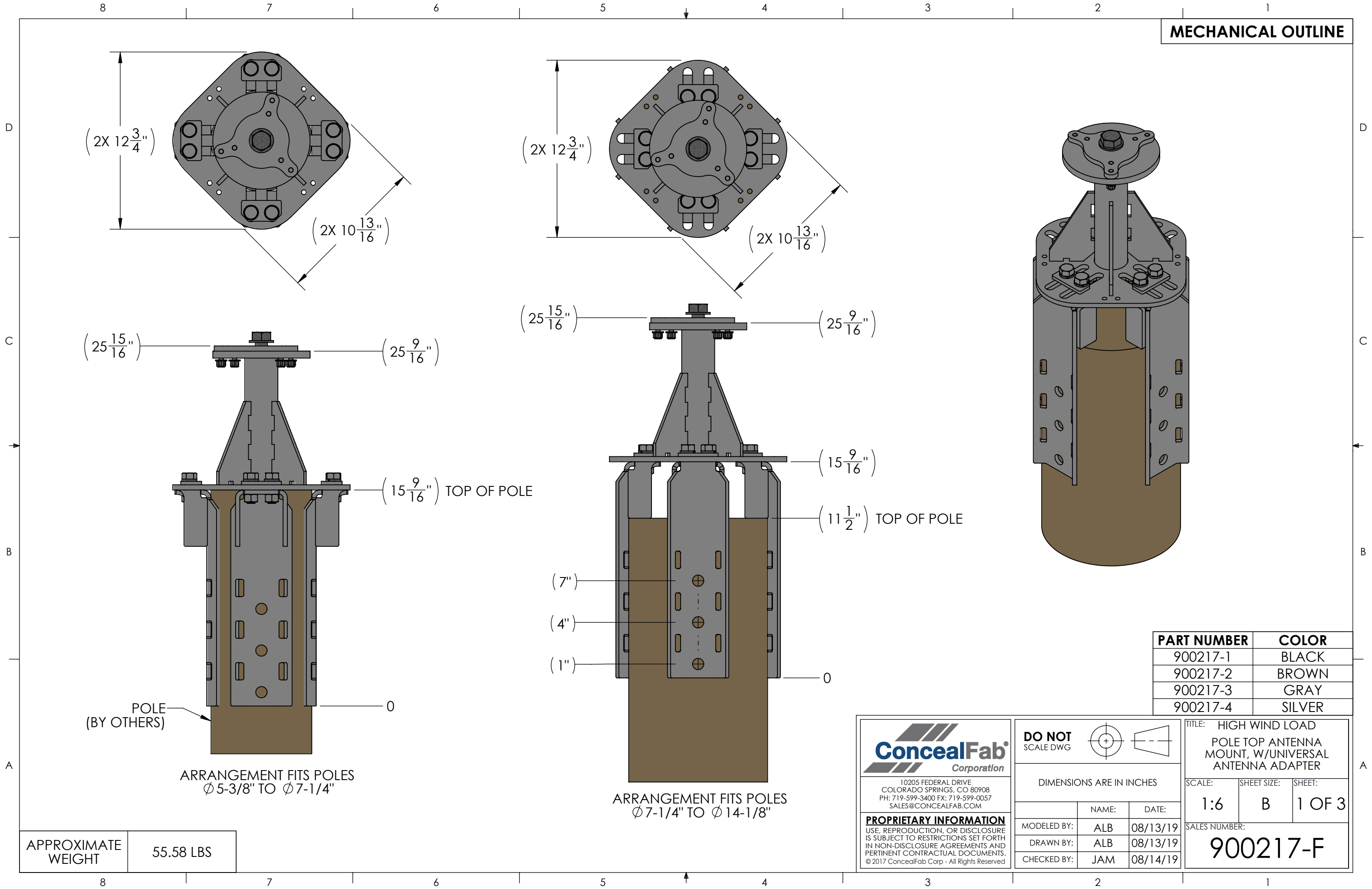
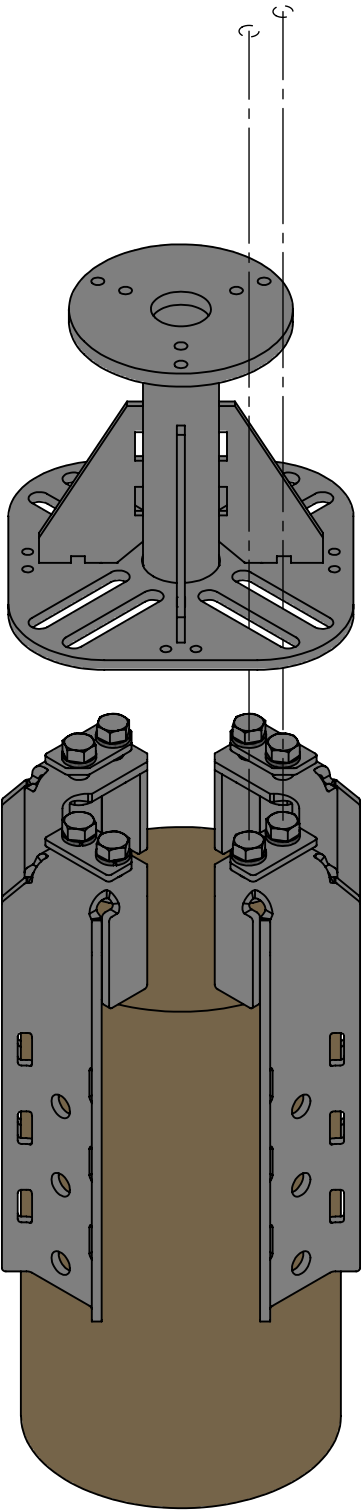
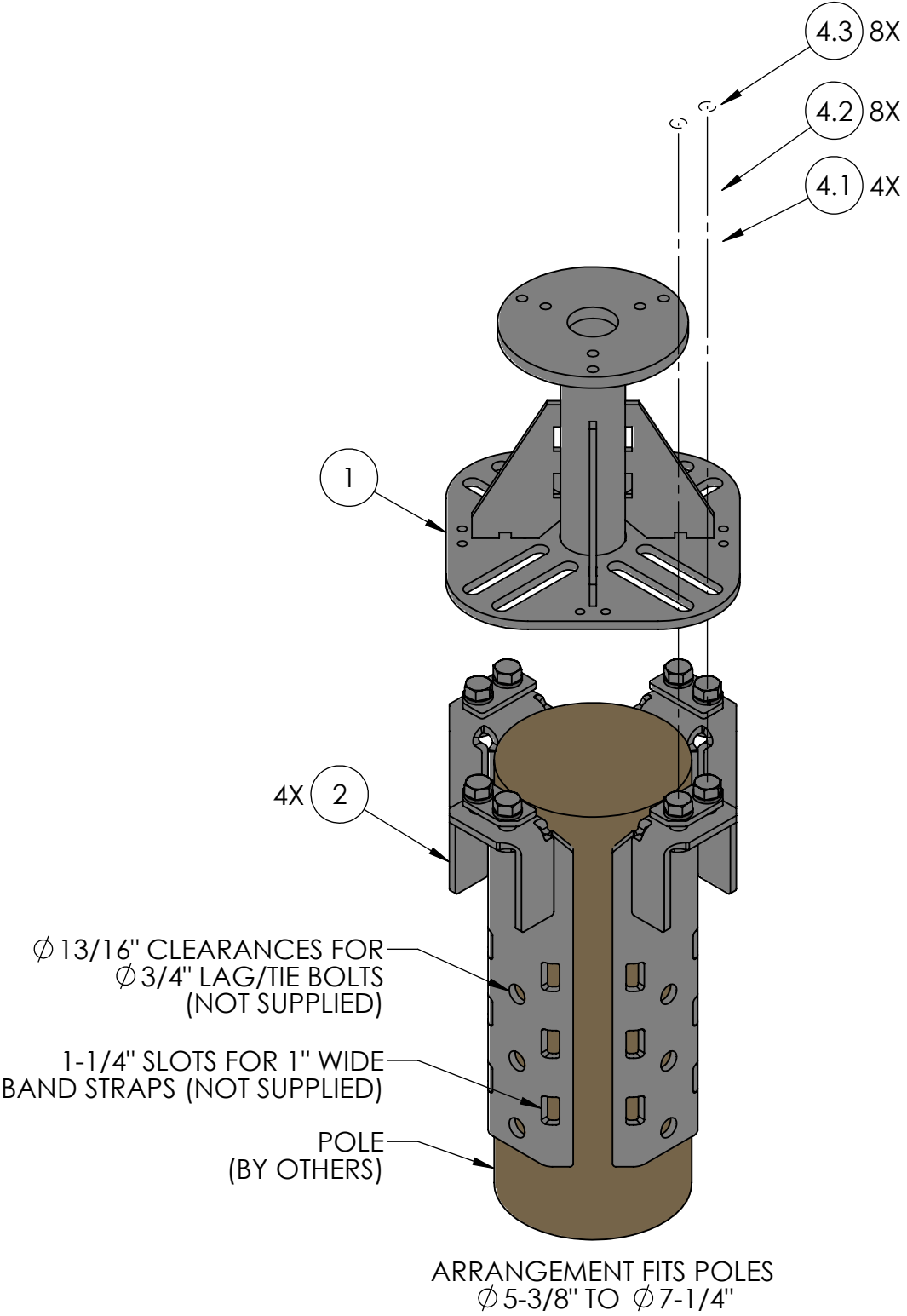


MECHANICAL OUTLINE





ITEM NO.	QTY.	DESCRIPTION
1	1	WELD, WIDE DIAMETER MAST
2	4	WELD, LEG, ECCENTRIC POLE TOP
8	1	KIT, CARBON LEG FASTENING
8.1	4	ECCENTRIC WASHER PLATE
8.2	8	PURCH, WASHER, SPLIT LOCK, 5/8, GALV
8.3	8	HHBT, 5/8"-11 X 1 3/4" LG, A325, GALV

10205 FEDERAL DRIVE
COLORADO SPRINGS, CO 80908
PH: 719-599-3400 FX: 719-599-0057
SALES@CONCEALFAB.COM

PROPRIETARY INFORMATION
USE, REPRODUCTION, OR DISCLOSURE IS SUBJECT TO RESTRICTIONS SET FORTH IN NON-DISCLOSURE AGREEMENTS AND PERTINENT CONTRACTUAL DOCUMENTS.
© 2017 ConcealFab Corp - All Rights Reserved

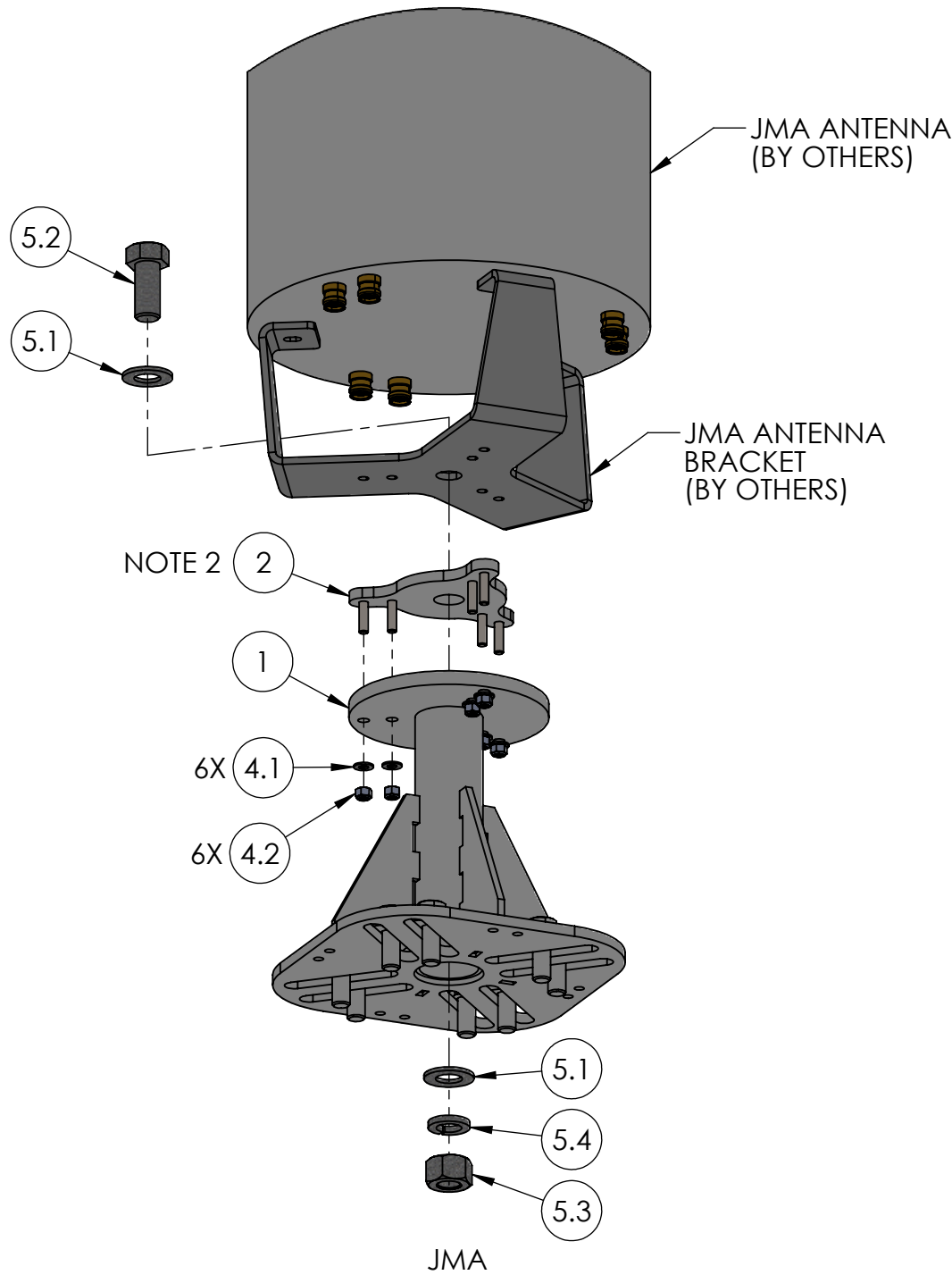
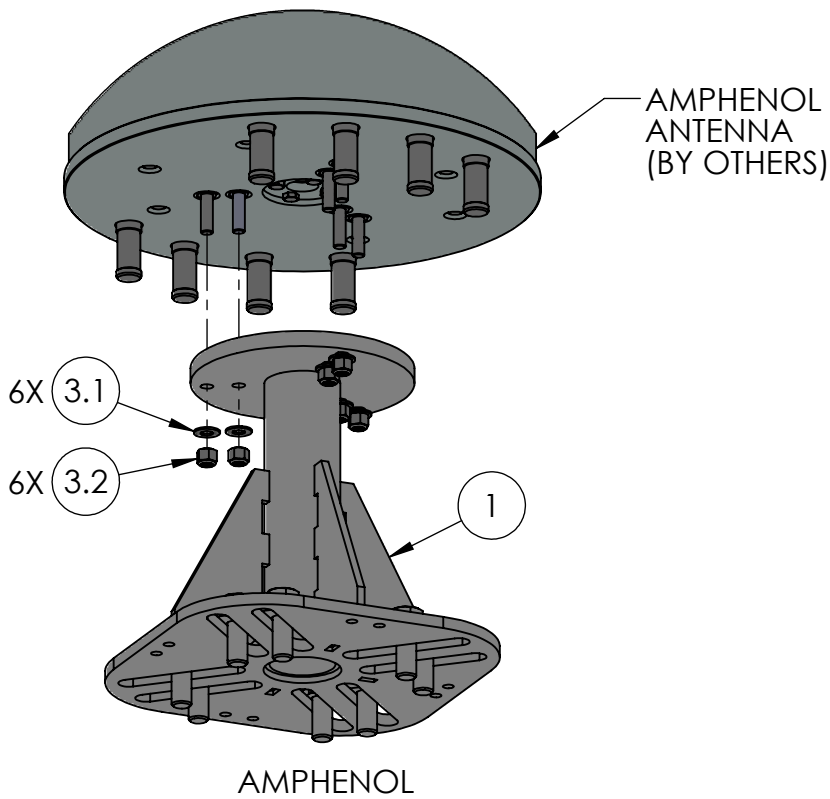
DO NOT SCALE DWG

DIMENSIONS ARE IN INCHES

MODELED BY:	ALB	08/13/19
DRAWN BY:	ALB	08/13/19
CHECKED BY:	JAM	08/14/19

TITLE: HIGH WIND LOAD
POLE TOP ANTENNA
MOUNT, W/UNIVERSAL
ANTENNA ADAPTER

SCALE: 1:6	SHEET SIZE: B	SHEET: 2 OF 3
SALES NUMBER: 900217-F		



ITEM NO.	QTY.	DESCRIPTION
1	1	WELD, WIDE DIAMETER MAST
2	1	PEM ASSY, SINGLE BOLT ADAPTER
4	1	KIT, CARBON LEG FASTENING
4.1	4	ECCENTRIC WASHER PLATE
4.2	8	PURCH, WASHER, SPLIT LOCK, 5/8, GALV
4.3	8	HHBT, 5/8"-11 X 1 3/4" LG, A325, GALV
3	1	KIT, AMPHENOL CANTENNA HARDWARE
3.1	6	WASHER, FLAT, 3/8", F436, GALV
3.2	6	PURCH, NUT, NYLOCK, 3/8-16, STL, ZINC PLATED
4	1	KIT, SINGLE BOLT ADAPTER HARDWARE
4.1	6	WASHER, FLAT, 5/16", F436, GALV
4.2	6	PURCH, NUT, NYLOCK, 5/16-18, STL, ZINC PLATED
5	1	KIT, JMA ANTENNA MOUNTING HARDWARE
5.1	2	WASHER, FLAT, 7/8", F436, GALV
5.2	1	HHBT, 7/8"-9 X 2" LG, A325, GALV
5.3	1	NUT, HEAVY HEX, 7/8"-9, A563, GRADE DH, GALV
5.4	1	PURCH, WASHER, SPLIT LOCK, 7/8, GALV

NOTES:

1. STAINLESS STEEL HARDWARE TO HAVE ANTISEIZE LUBRICANT APPLIED BEFORE ASSEMBLY.
2. ATTACH ANTENNA TO ITEM 2 BEFORE ATTACHING TO ITEM 1.

10205 FEDERAL DRIVE
COLORADO SPRINGS, CO 80908
PH: 719-599-3400 FX: 719-599-0057
SALES@CONCEALFAB.COM

PROPRIETARY INFORMATION
USE, REPRODUCTION, OR DISCLOSURE IS SUBJECT TO RESTRICTIONS SET FORTH IN NON-DISCLOSURE AGREEMENTS AND PERTINENT CONTRACTUAL DOCUMENTS.
© 2017 ConcealFab Corp - All Rights Reserved

DO NOT SCALE DWG

DIMENSIONS ARE IN INCHES

MODELED BY:	ALB	08/13/19
DRAWN BY:	ALB	08/13/19
CHECKED BY:	JAM	08/14/19

TITLE: HIGH WIND LOAD
POLE TOP ANTENNA
MOUNT, W/UNIVERSAL
ANTENNA ADAPTER

SCALE: 1:6	SHEET SIZE: B	SHEET: 3 OF 3
---------------	------------------	------------------

SALES NUMBER:
900217-F