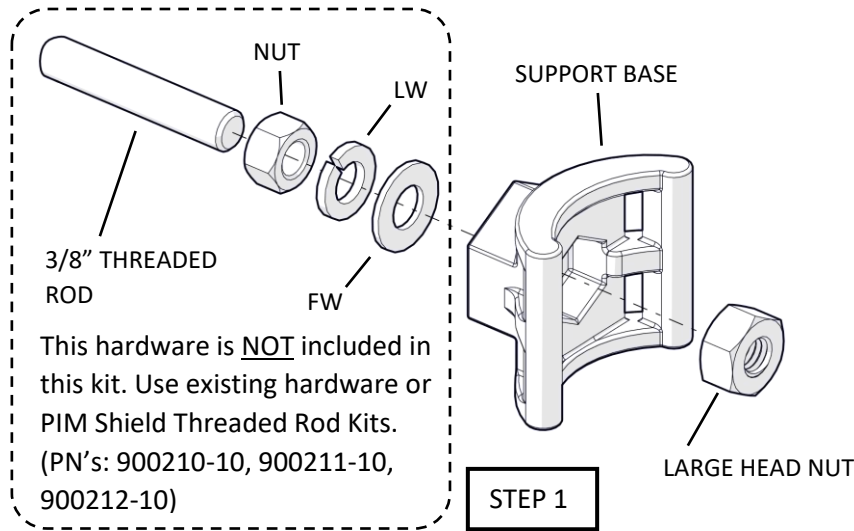


900209-10: PIM Shield Cable Support Base with Large Head Nut (sold in packages of 10)

APRIL 2019

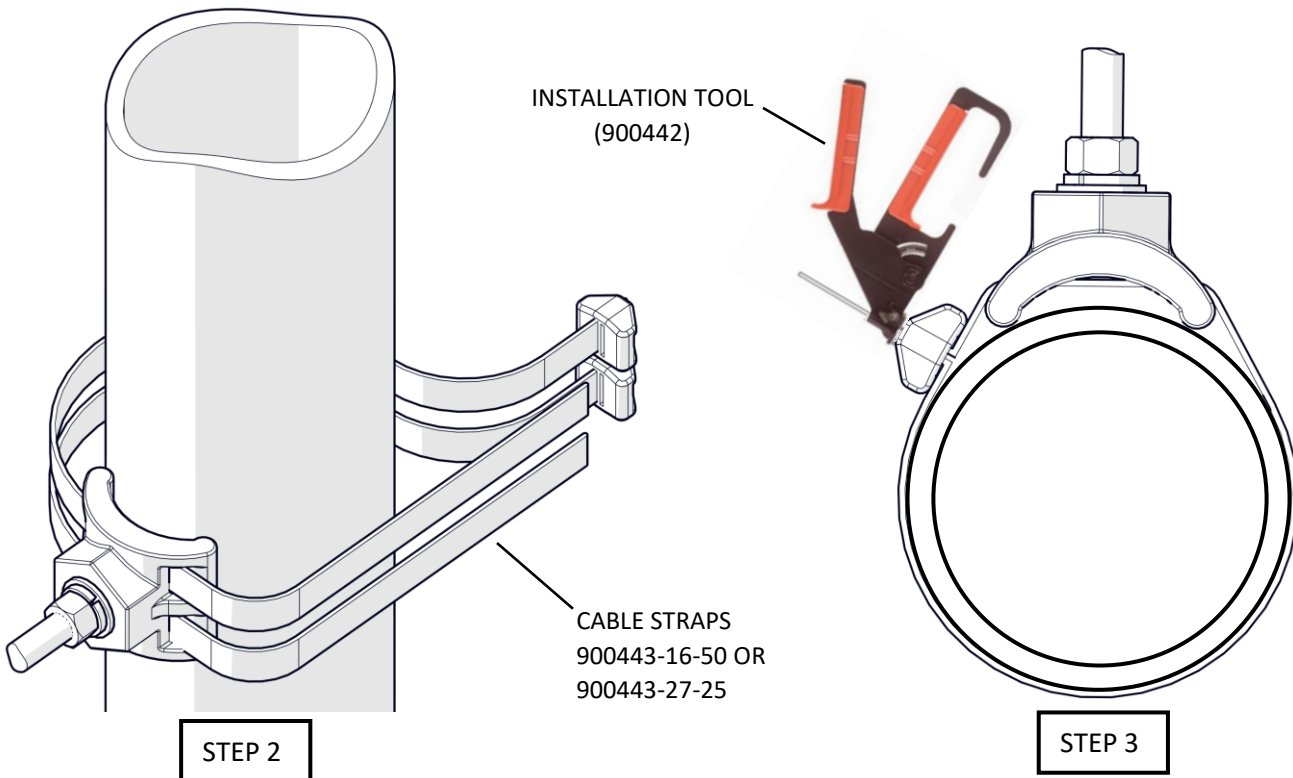
STEP 1

Attach Threaded Rod to PIM Shield Cable Support Base (Torque greater than 10 Ft-lb).



STEP 2

Pass appropriate length of PIM Shield Cable Straps through Low PIM Cable Support Base, around pipe, and back through Locking Head.



STEP 3

Use Cable Strap installation tool (900442 or equivalent) to tighten Cable Strap in position shown and flush-cut tail to Locking Head.