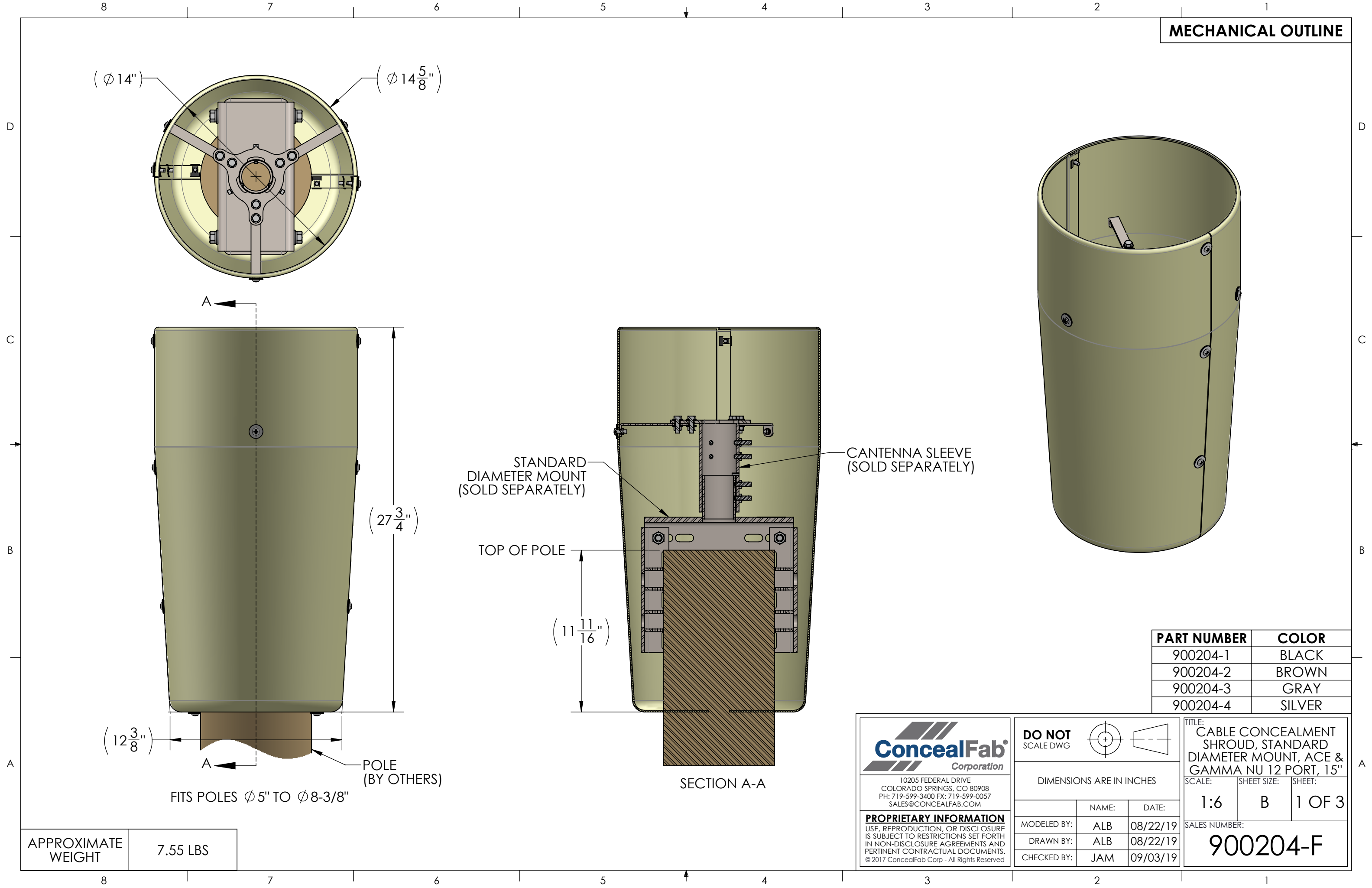


MECHANICAL OUTLINE



STANDARD
DIAMETER MOUNT
(SOLD SEPARATELY)

CANTENNA SLEEVE
(SOLD SEPARATELY)

TOP OF POLE

SECTION A-A

POLE
(BY OTHERS)

FITS POLES ϕ 5" TO ϕ 8-3/8"

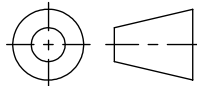
PART NUMBER	COLOR
900204-1	BLACK
900204-2	BROWN
900204-3	GRAY
900204-4	SILVER



10205 FEDERAL DRIVE
COLORADO SPRINGS, CO 80908
PH: 719-599-3400 FX: 719-599-0057
SALES@CONCEALFAB.COM

PROPRIETARY INFORMATION
USE, REPRODUCTION, OR DISCLOSURE
IS SUBJECT TO RESTRICTIONS SET FORTH
IN NON-DISCLOSURE AGREEMENTS AND
PERTINENT CONTRACTUAL DOCUMENTS.
© 2017 ConcealFab Corp - All Rights Reserved

DO NOT SCALE DWG



DIMENSIONS ARE IN INCHES

	NAME:	DATE:
MODELED BY:	ALB	08/22/19
DRAWN BY:	ALB	08/22/19
CHECKED BY:	JAM	09/03/19

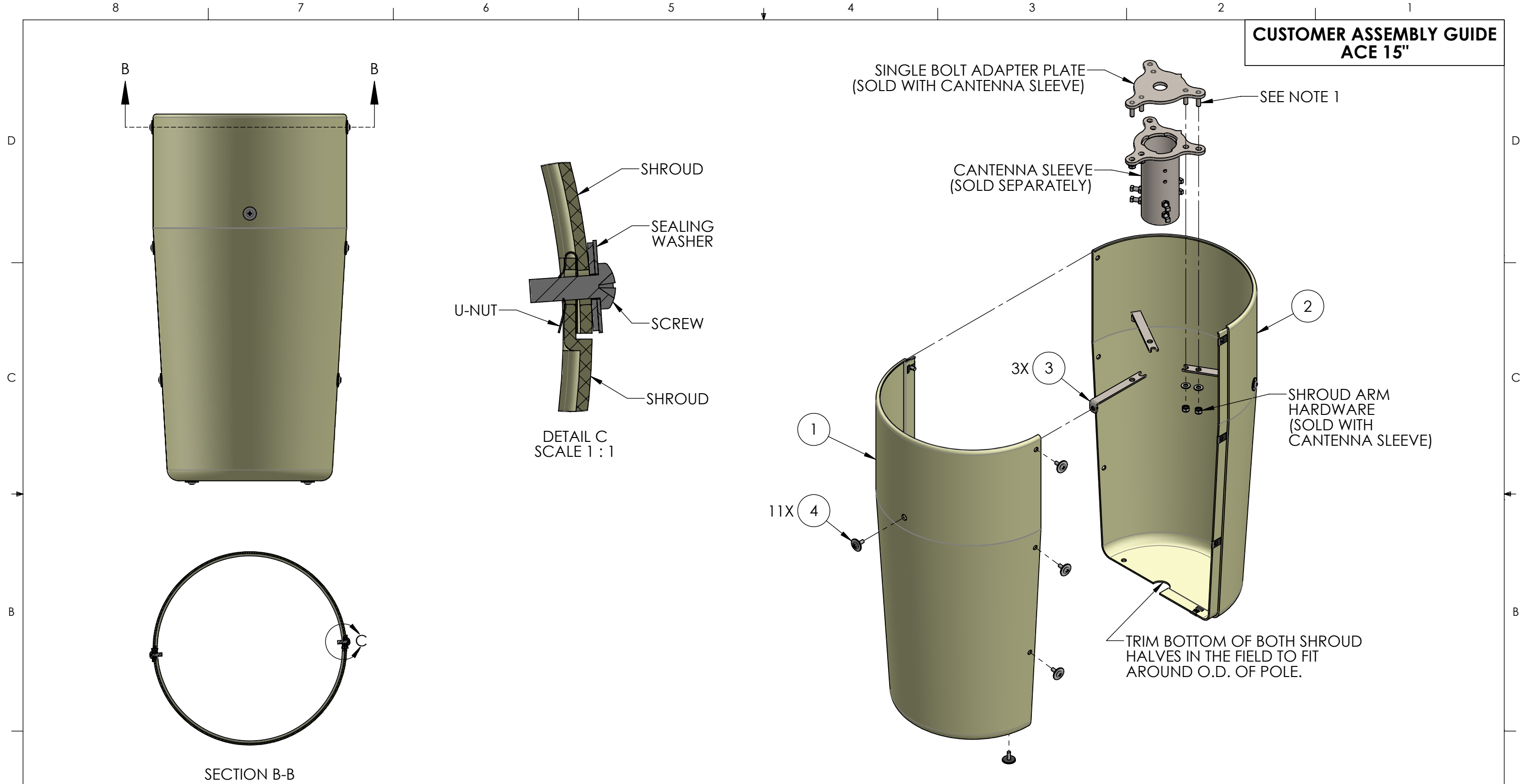
TITLE:
CABLE CONCEALMENT
SHROUD, STANDARD
DIAMETER MOUNT, ACE &
GAMMA NU 12 PORT, 15"

SCALE:	SHEET SIZE:	SHEET:
1:6	B	1 OF 3

SALES NUMBER:
900204-F

APPROXIMATE WEIGHT	7.55 LBS
--------------------	----------

**CUSTOMER ASSEMBLY GUIDE
ACE 15"**



NOTES:

1. STAINLESS STEEL HARDWARE SHALL HAVE ANTISEIZE LUBRICANT APPLIED BEFORE ASSEMBLY.

ITEM NO.	QTY.	DESCRIPTION
1	1	ASSY, SHROUD HALF, SINGLE HOLE
2	1	ASSY, SHROUD HALF, DOUBLE HOLE
3	3	PEM ASSY, SHROUD ARM
4	11	ASSY, WASHER, SEALING, 1/4", 18-8 SS, 1" O.D., PHMS, 1/4"-20 X 3/4" LG, 18-8 SS

ConcealFab
Corporation

10205 FEDERAL DRIVE
COLORADO SPRINGS, CO 80908
PH: 719-599-3400 FX: 719-599-0057
SALES@CONCEALFAB.COM

PROPRIETARY INFORMATION
USE, REPRODUCTION, OR DISCLOSURE IS SUBJECT TO RESTRICTIONS SET FORTH IN NON-DISCLOSURE AGREEMENTS AND PERTINENT CONTRACTUAL DOCUMENTS.
© 2017 ConcealFab Corp - All Rights Reserved

DO NOT SCALE DWG

DIMENSIONS ARE IN INCHES

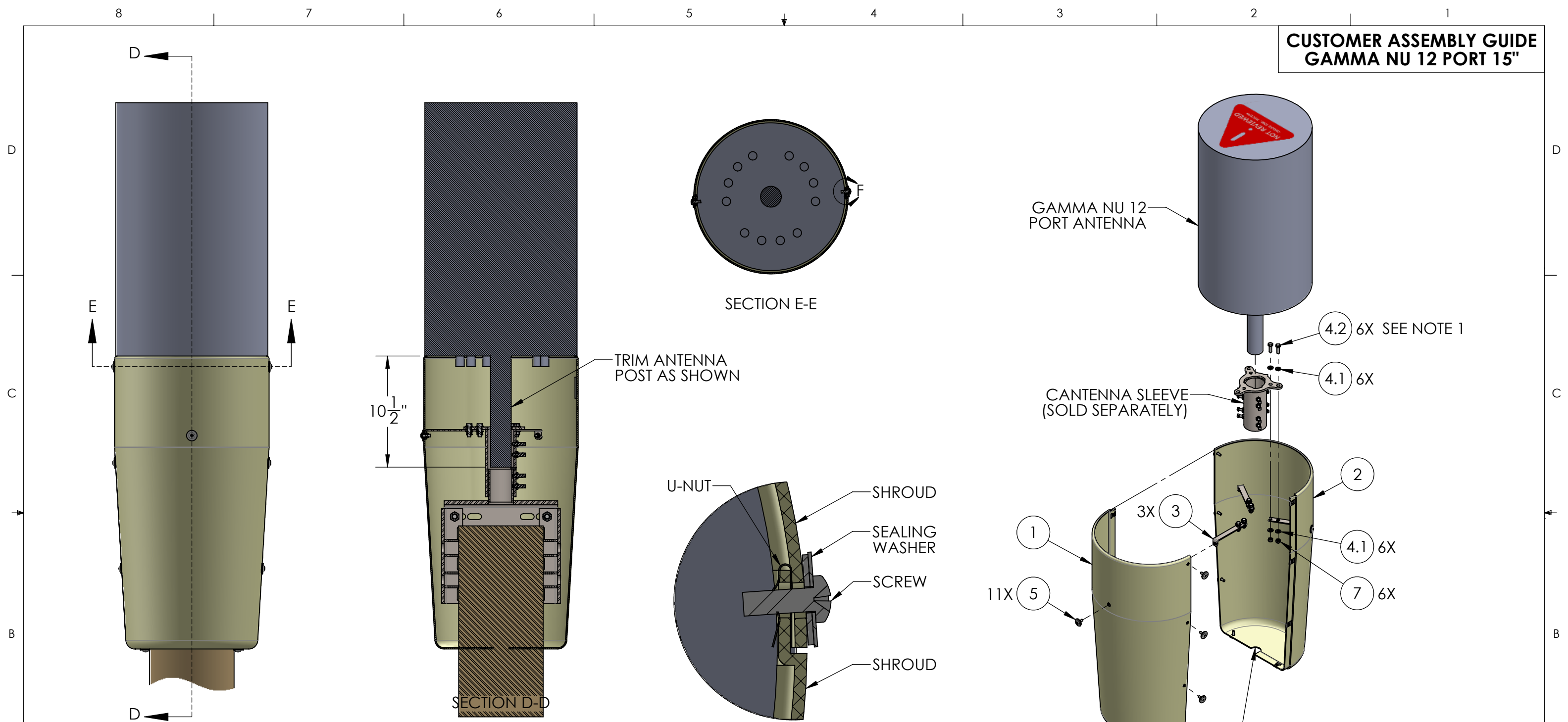
MODELED BY:	ALB	08/22/19
DRAWN BY:	ALB	08/22/19
CHECKED BY:	JAM	09/03/19

TITLE: CABLE CONCEALMENT SHROUD, STANDARD DIAMETER MOUNT, ACE & GAMMA NU 12 PORT, 15"

SCALE: 1:7 SHEET SIZE: B SHEET: 2 OF 3

SALES NUMBER: **900204-F**

**CUSTOMER ASSEMBLY GUIDE
GAMMA NU 12 PORT 15"**



NOTES:

1. STAINLESS STEEL HARDWARE SHALL HAVE ANTISEIZE LUBRICANT APPLIED BEFORE ASSEMBLY.

ITEM NO.	QTY.	DESCRIPTION
1	1	ASSY, SHROUD HALF, SINGLE HOLE
2	1	ASSY, SHROUD HALF, DOUBLE HOLE
3	3	PEM ASSY, SHROUD ARM
4	1	KIT, SHROUD ARM MOUNTING HARDWARE
4.1	12	WASHER, FLAT, 5/16", 18-8 SS
4.2	6	HHCS, 5/16"-18 X 1" LG, 18-8 SS
4.3	6	NUT, NYLOCK, 5/16"-18, 18-8 SS
5	11	ASSY, WASHER, SEALING, 1/4", 18-8 SS, 1" O.D., PHMS, 1/4"-20 X 3/4" LG, 18-8 SS

DETAIL F
SCALE 1 : 1

SCALE 1 : 12

 10205 FEDERAL DRIVE COLORADO SPRINGS, CO 80908 PH: 719-599-3400 FX: 719-599-0057 SALES@CONCEALFAB.COM	DO NOT SCALE DWG		TITLE: CABLE CONCEALMENT SHROUD, STANDARD DIAMETER MOUNT, ACE & GAMMA NU 12 PORT, 15"	
	DIMENSIONS ARE IN INCHES		SCALE: 1:9	SHEET SIZE: B
PROPRIETARY INFORMATION USE, REPRODUCTION, OR DISCLOSURE IS SUBJECT TO RESTRICTIONS SET FORTH IN NON-DISCLOSURE AGREEMENTS AND PERTINENT CONTRACTUAL DOCUMENTS. © 2017 ConcealFab Corp - All Rights Reserved	NAME: ALB	DATE: 08/22/19	SALES NUMBER: 900204-F	
MODELED BY: ALB	DRAWN BY: ALB	DATE: 08/22/19		
CHECKED BY: JAM	DATE: 09/03/19			