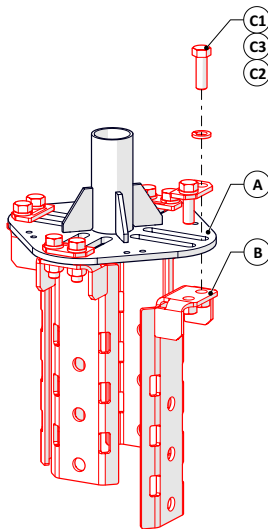


ITEM	QTY	DESCRIPTION	PART NO.	PKG'D
A	1	WIDE DIAMETER MAST	101910	
B	4	LEG, POLE TOP, SHORT, SS	101625	
C	4	KIT, MOUNT LEG HARDWARE	113919	
C1	8	HHBT, 5/8"-11 X 2" LG, FT, 18-8 SS	011011	
C2	4	WASHER PLATE	009867	
C3	8	WASHER, SPLIT LOCK, 5/8", 18-8 SS	002680	
D	1	CORROSION RESISTANT ANTISEIZE, NICKEL, VIBRA-TITE, 90722	002954	

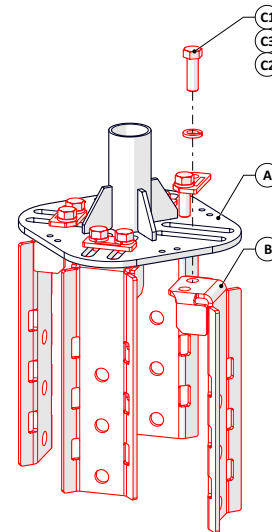
Note: Stainless steel hardware to have antiseize lubricant applied before assembly.

5-3/8" to 7-1/4" Pole



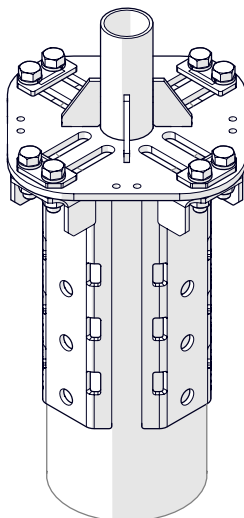
Note: Loosely attach hardware.

7-1/4" to 14-1/8" Pole



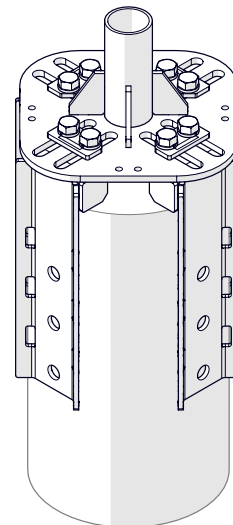
Note: Loosely attach hardware.

5-3/8" to 7-1/4" Pole



Note: Attach with 3X 3/4" Lag/Tie Bolts or 3X 1" Wide Band Straps (supplied by others). Tighten hardware.

7-1/4" to 14-1/8" Pole



Note: Attach with 3X 3/4" Lag/Tie Bolts or 3X 1" Wide Band Straps (supplied by others). Tighten hardware.